

What's New in Geomatica® 10.3.2?

Introduction to Geomatica® 10.3.2

PCI Geomatics is a leader in the provision of advanced satellite image processing tools and services. With over 28 years of experience in remote sensing and image processing – we have raised the bar with our Geomatica 10.3.2 release. By adding on to our existing capabilities and functionality within Geomatica, we are providing our users the best technology available to turn spatial data into useful information.

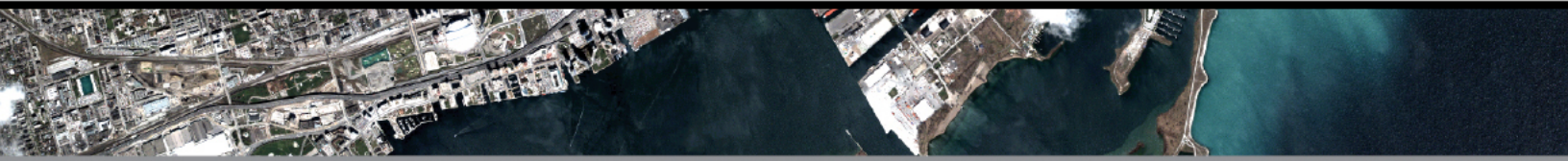
Overall Stability

PCI's technical team has worked vigilantly to ensure that the Version 10.3.2 release is its most stable ever. A large number of customer-reported issues have been resolved, including the following:

| ID | Description |
|-------|---|
| 69858 | Issues when generating epipolars and DEM from TerraSar-X data |
| 70026 | Projection problems when exporting to KML/KMZ |
| 70493 | Addition of support for OTH Gold vector data |
| 70642 | Simplification of loading RapidEye data and model in Focus |
| 70694 | Improved stability in Focus algorithm librarian |
| 71205 | Addition of support for Terrasar-X EEC format files |
| 71217 | Problems when choosing View Images in OrthoEngine |
| 71242 | Repair issues found in texture analysis (TEX) |
| 71450 | Improve results from automatic mosaicking |
| 71541 | Add JPEG2 support when running PANSHARP |
| 71773 | Issues when calculating vector length in Focus |

Sensor Support

PCI Geomatics is an industry leader in supporting sensors, and with each Geomatica release our list grows, allowing you to take advantage of the newest and best sensors available.



In Geomatica Version 10.3.2, PCI now includes support for:

- HJ-1A/B First two sensors of the Chinese Environment and Disaster Monitoring Microsatellite Constellation

The constellation of the two satellites can form the multi-spectrum image with 30-m resolution of any location every 2 days. HJ-1A/B has not only supported the day-to-day services of environment protection and disaster monitoring, but also attempt to provide services in the fields of forest, grassland fire monitoring and global crop estimation.

In addition, Geomatica Version 10.3.2 includes improved support for:

- Radarsat-2 Upgrades to the math modeling have improved the overall accuracy of Radarsat-2 correction using the Toutin model with no GCPs. This is an accurate, alternative solution to the RPC model.

Atmospheric Correction Upgrades

Version 10.3.2 includes upgrades to PCI's existing ATCOR, atmospheric correction capabilities. These upgrades include:

- Increased sensor support including:
 - AVNIR-2
 - DMC
 - Formosat-2
 - KOMPSAT-2
 - ORBVVIEW-3
 - RapidEye
- Simplified use for tilt sensors
- Re-organized GUI for process flow in Geomatica Focus
- Improved stability and performance

Note: The ATCOR 2 and ATCOR 3 models are incorporated into the Geomatica product under license from Deutsches Zentrum für Luft- und Raumfahrt e.V. (German Aerospace Center). These models are covered by German Patent P 41 02 579.2.