

Feature ObjX Version 1.0.4

With FeatureObjX you turn your imagery into information by extracting visual features from satellite and aerial images. It's a user-friendly, stand-alone software application. With FeatureObjX you can maximize your production capabilities as it combines interactive and intelligent editing tools with sophisticated image analysis and machine-learning technology.

PCI Geomatics is proud to announce the release of Version 1.0.4 of Feature ObjX, including the following functionality, added to help our users turn spatial data into useful information.

New Features

Linear Feature Extraction/Extracting Centerlines and Centroids

Linear feature extraction is now supported as a two-step process. The first step is to extract polygonal features as done in previous version of the software. Then one uses the Centerline extraction tool to extract line segments from these polygons.

Centerline Extraction

The Centerlines tool takes each polygon in a layer and reduces it to line. The result may be either a very narrow line or multi-line segments, which are stored in a new vector layer. *Note: The Centerline tool uses the underlying raster image to extract the line; therefore, the tool does not work when no raster image is loaded.*

Centroids

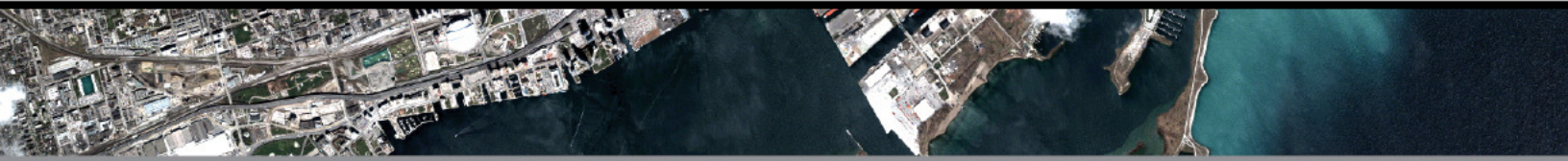
You may also extract centroids from a polygon shape layer. This creates a new shape layer containing the points for the extracted centroid for each polygon in the selected shape layer.

Shape Labeling

The label tool allows a user to add text to a shape layer. Labels may be created, edited and deleted. You may select any available system font and size. *Note: Labels are saved as part of the project file and not part of the shape layer.*

Support of MrSID Format

MrSID is a wavelet-based image compression technology which can utilize both lossy and lossless encoding. FOX supports reading of MrSID image files using LizardTech's decoding software development kit (DSDK). The DSDK also supports decoding JPEG2000 file format.



Existing Feature Improvements

Multi-band Display

Using this tool, a user can select multiple bands for each channel in the RGB color display so that the resulting RGB images for multi-spectral images are more realistic.

Vector Layer Display

In the vector layer properties, a user can now change display properties of selected shapes.

Overall Stability

PCI's technical team has worked vigilantly to ensure that this release is it's most stable ever. A large number of customer-reported issues have been resolved.

With just a few clicks, you can extract simple features such as bodies of water or cloud cover over a large area. Easy-to-follow manual editing tools and post-processing algorithms such as polygon squaring allow you to achieve precision results in the shortest time when extracting visually ambiguous features such as asphalt-roofed buildings in urban areas.

FeatureObjX Applications

- Urban Planning
- GIS Update
- Forestry
- Environmental Monitoring
- Change Detection
- Target Detection
- Education